

Go

Email... Go

[Register](#) or [Forgotten Password](#)

EveningExpress

-  [YourJob](#)
-  [YourAds](#)
-  [YourHome](#)
-  [YourCar](#)
-  [YourDining](#)
-  [YourBreaks](#)
-  [FamilyAnnouncements](#)

HOME

NEWS

- [Local News](#)
- [News Videos](#)
- [Scotland News](#)
- [UK News](#)
- [World News](#)
- [Energy News](#)

SPORT

- [Aberdeen FC](#)
- [Other Sport](#)

FOOD REVIEWS

- [Restaurants](#)
- [Pubs](#)
- [Take Aways](#)

CELEBRITY

- [General](#)
- [Music](#)
- [Films](#)

PHOTO GALLERY

PROPERTY PRICE SEARCH

- [New Homes](#)

COMPETITIONS

DRIVE

LIVE MATCH COMMENTARY

RSS

Weather

Aberdeen scientist can predict roll of dice

University boffin creates equation for die

Published: 17/09/2012

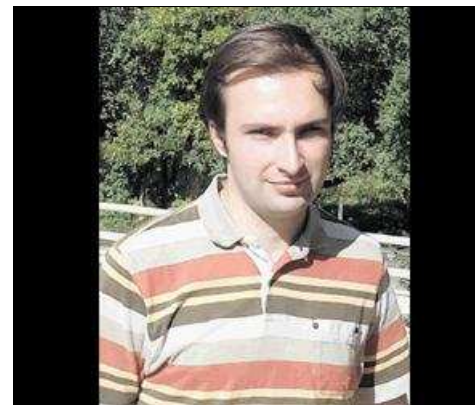
A SCIENTIST from Aberdeen has helped work out a way to predict the roll of the dice.

Marcin Kapitaniak, who is studying for a PhD in engineering, collaborated with researchers in Poland to work out what way a die is likely to end up facing.

The University of Aberdeen and the Technical University of Lodz developed an equation to take account of everything from the shape of the dice to the influence of gravity.



Bookmark with:



STUDIES: Marcin Kapitaniak has helped work out how to predict how dice land.

[Buy Photos](#)
[Media Pack](#)
[Clip Search](#)

2 comments

[Front page](#) | [News](#) | [Sport](#) | [Celebrity](#) | [Food Reviews](#) | [RSS](#) | [Weather](#) | [Competitions](#) | [Photo Gallery](#)

0 Stars

FOLLOW US ON



Comments for this thread are now closed.